

Rye Hill College, Newcastle, UK

Owner: Newcastle College
Architect: RMJM, UK
Structural Eng.: RMJM, UK
Contractor: Sir Robert McAlpine, UK



Execution details

Product: CBSP
Slab surface: ~4'700 m²
Max. span: 8,5 m
Slab thickness: 30 / 32,5 cm



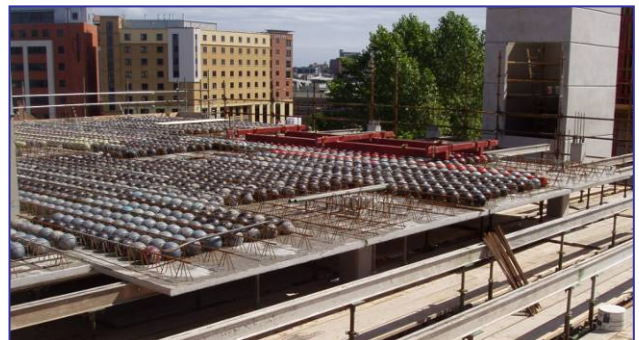
Benefits

Speed of construction
Concrete reduction
CO₂ emissions reduction



Special features

Semi-precast application "wet"
High quality surface finish to the soffits



Year of completion

2007

