

## Sheikh Zayed Desert Learning Centre, Al Ain, UAE

Client: Al Ain Wildlife Park & Resort, Abu Dhabi  
Architect: Chalabiarchitects&partners, Vienna  
Structural Eng.: Bollinger – Grohmann – Schneider, Vienna  
Contractor: Ed. Züblin AG, Abu Dhabi



### Execution details

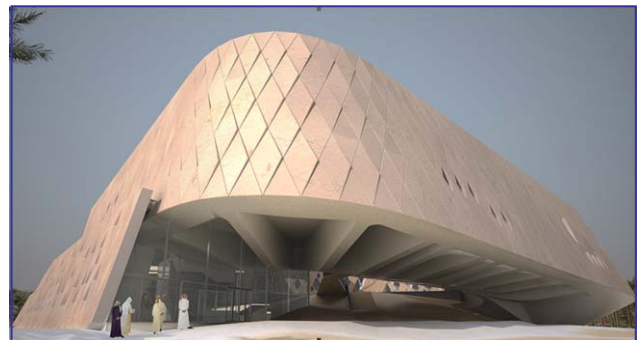
Product: CBCM Slim- & Eco-Line  
Surface: 3'500 m<sup>2</sup>  
Span: up to 16 m  
Slab thickness: 350, 450, 500, 600 mm



### CobiAx benefits

- load reduction
- material reduction
- CO<sub>2</sub> reduction

Concrete reduction: 466 m<sup>3</sup>  
Load reduction: 1'117 to  
Reduction of CO<sub>2</sub> emissions: 98 to



### Special features

- Thermo Active Building Systems
- Challenging architecture and floor layouts
- Remarkable reinforcement detailing
- Exposed concrete soffit



### Year of completion

2012

