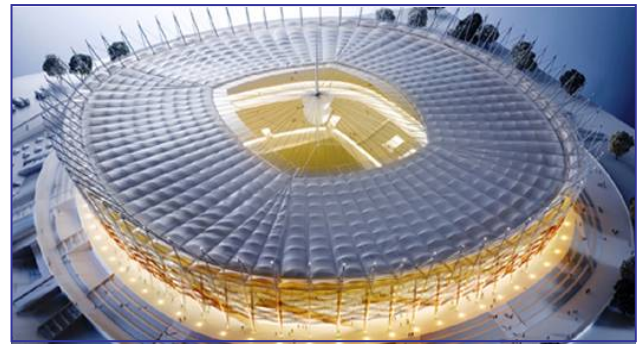


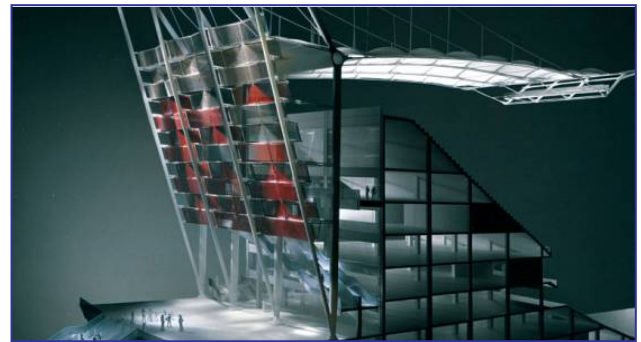
National Stadium, Warsaw, Poland

Owner: Polish Sports Ministry
Architect: JSK, Warszawa
Structural Eng.: Matejko I Partnerzy, Warszawa
Frame contractor: Alpine-PBG / Hydrobudowa



Execution details

Product: CBCM-S-180
Total slab surface: 152'000 m²
Max. span: up to 10 m
Slab thickness: 40 cm



Cobiax benefits - Open Space Architecture
- Weight reduction
- Fast processing

Concrete reduction: ~13'704 m³
Load reduction: ~34'260 to
Reduction of CO₂ emissions: ~2'878 to



Special features

Cobiax in combination semi precast elements / filigree slab
Cage modules assembled on site
Bad subsoil close to the river
Impalement foundation



Year of completion

2011

