

## Residential and Businessbuilding, Garmisch

Owner: Hummel & Dachs

Architect: Büro Albl

Structural Eng.: FW Frühholz u. Wöhrmann

Approving Eng.: Ing.-Büro F. Rössl



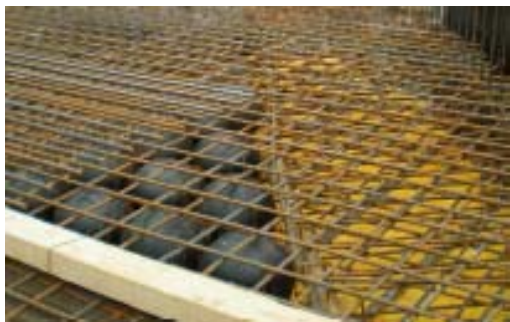
## Execution details

Product: CBCM

Surface: ~ 7'000 m<sup>2</sup>

Span: 11 x 8 m

Slab thickness: 40, 45 cm



## Benefits

Application reason: flat slab, span

Concrete reduction (total): 365 m<sup>3</sup>

Load reduction (total): 950 t

Reduction of CO<sub>2</sub> emissions: 73 t



## Special features

Insitu execution



## Contractor

Xaver Lutzenberger

## Year of completion

2007

