

## Labels Berlin II, Berlin

Client: Labels II Stralauer Allee 12 GmbH

Architect: HHF architekten GmbH, Basel

Structural Eng: PPW D. Paulisch u. Partner  
Planungsgemeinschaft, Berlin

Approving Eng: K LW Ingenieure GmbH, Berlin



## Execution details

Product: CBCM-S-140

Surface: ~ 6'500 m<sup>2</sup>

Max. span: 9,80 m

Slab thickness: 30 cm



## Cobiax benefits

- load reduction
- large span

Concrete reduction (total): ~ 240 m<sup>3</sup>

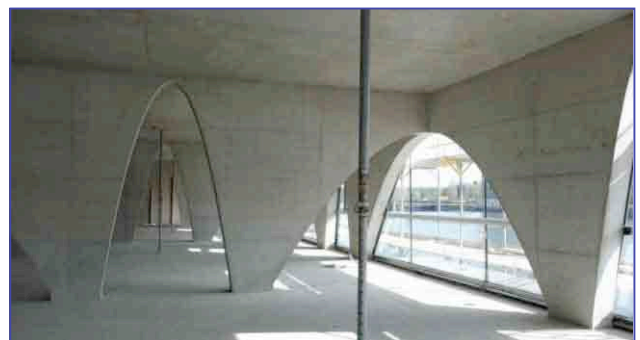
Load reduction (total): ~ 600 to

Reduction of CO<sub>2</sub> emissions: ~ 51 to



## Special features

Concrete core activation



## Contractor

Ingenieurbau-Gesellschaft mbH, Berlin

## Year of completion

2010

