

FrankfurtHochVier / Ffm

Owner: FrankfurtHochVier GmbH & Co. KG

Architect: M fuksas ARCH

Structural Eng.: Krebs und Kiefer, Darmstadt

Approving Eng.: KHP König und Heunisch,
Frankfurt



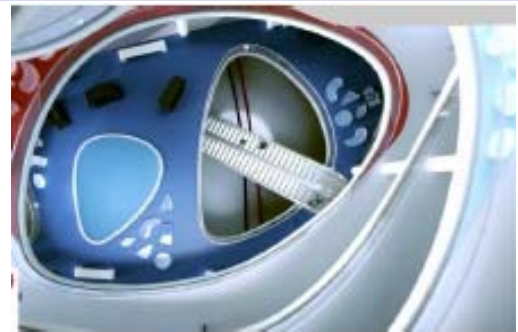
Execution details

Product: CBCM

Surface: ~ 10'000 m²

Max. span: 12 m

Slab thickness: 70 cm



Benefits

Application reason: load reduction

Concrete reduction (total): 700 m³

Load reduction (total): 1'750 t

Reduction of CO₂ emissions: 140 t



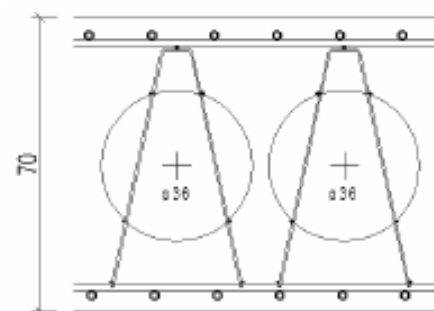
Special features

Large openings

High horizontal forces

Special cage

Void formers positioned in the middle of cross-section



Contractor

Ed. Züblin AG, Frankfurt

Year of completion

2008

