

Einkaufszentrum, Bonn

Owner: Proconsil GmbH & Co. KG

Architect: Architekturbüro Norbert Ruge

Structural Eng.: Ingenieurbüro Hemker

Approving Eng.: Jeromin und Vester



Execution details

Product: CBCM

Surface: ~ 8'500 m²

Max. span: 12 x 12 m

Slab thickness: 40, 45, 50 cm



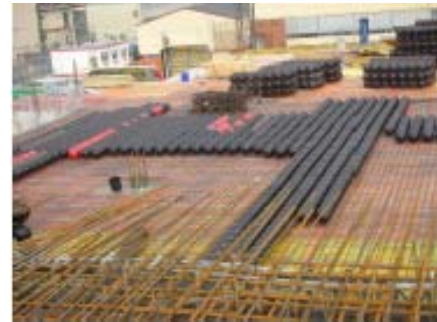
Benefits

Application reason: flat slab

Concrete reduction (total): 670 m³

Load reduction (total): 1'700 t

Reduction of CO₂ emissions: 133 t



Special features

Special solution against a solution with beams



Contractor

Runkel Hochbau GmbH

Year of completion

2007

