

UKBB, Universitäts-Kinderspital Beider Basel

Client: Kantone Basel-Stadt / Basel-Landschaft

Architect: Stump & Schibli Architekten BSA AG, Basel

Structural Eng.: WGG Schnetzer Puskas Ingenieure AG, Basel

Contractor: ERNE AG, Laufenburg



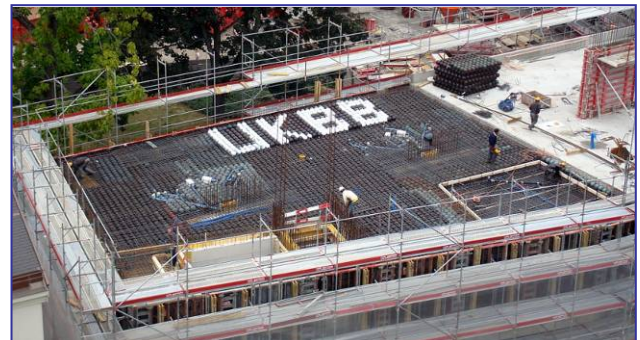
Execution details

Product: CBCM-E-225, CBLM-E-225

Surface: 12'300 m²

Max. span: 12 m

Slab thickness: 36 cm



Benetifs

Main reason: Weight reduction
Earthquake resistance
Flexible use
Open plan

Concrete reduction (total): ~1'350 m³

Load reduction (total): ~3'400 t

Reduction of CO₂ emissions: ~280 t



Special features

High flexibility in usage

Columns grid was set

The achieved reduction of dead load has a positive impact in case of an earthquake



Year of completion

2010

