

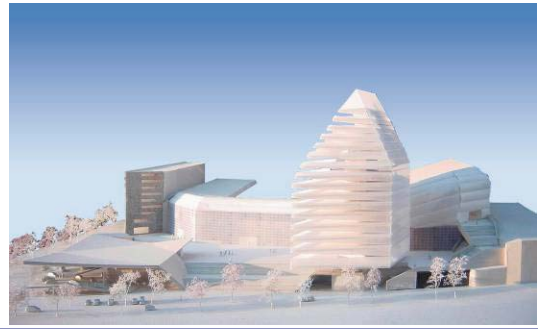
St. Jakob Turm, Basel

Owner: Balintra AG, Basel

Architecture: Herzog & De Meuron, Basel

Structural Eng.: WGG Schnetzer Puskas, Basel

Contractor: Implenia, Basel



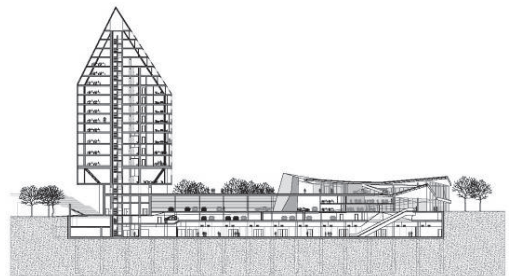
Execution details

Product: CBLM

Surface: ~10'000 m²

Max. span: up to 10 m

Slab thickness: 30 cm



Benefits

Main reason: Weight

Concrete reduction (total): 443 m³

Load reduction (total): 1'109 to

Reduction of CO₂ emissions: 96 t



Special features

Increased demand on earthquake resistance due to extraordinary floor plan diminishing towards the building base

Changing floor plans



Year of completion

2008

