

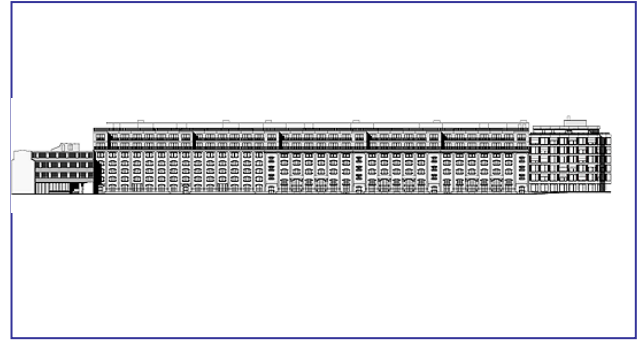
## Lagerhaus 62, Zürich

Owner: Zürcher Lagerhaus AG, Zürich

Architecture: Anne-Marie Fischer und Reto Visini

Structural Eng.: Basler & Hofmann AG, Zürich

Contractor: Züblin Murer AG, Zürich



## Execution details

Product: CBLM/CBCM

Surface: ~3'500 m<sup>2</sup>

Span: up to 7 m

Slab thickness: 24 cm



## Benefits

Main reason:	Weight
Concrete reduction (total):	102 m <sup>3</sup>
Load reduction (total):	3100 kN
Reduction of CO <sub>2</sub> emissions:	20 t



## Special features

No special reinforcement of the existing structure and foundation needed

Easy change of use



## Year of completion

2007

