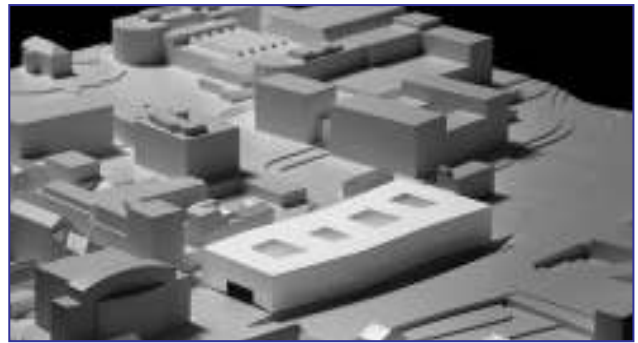


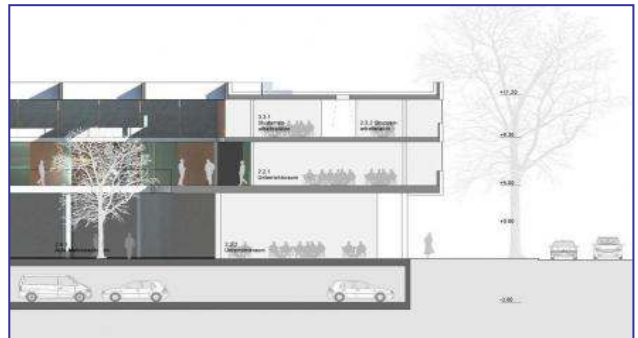
University of Applied Sciences Swiss Northwest, Olten

Owner: Canton Solothurn
Architect: Bauart AG, Bern
Structural Eng.: WAM Partner AG, Solothurn
Contractor: Erne AG, Olten



Execution details

Product: CBCM-S-180
CBCM-E-225 / 270 / 405
Surface: 17'000 m²
Span: up to 12,5 m
Slab depths: 30 - 57 cm



Cobiax benefits

- large span
- combination with post-tension
- CO₂ reduction

Concrete reduction: 1'920 m³
Load reduction: 34'260 to
Reduction of CO₂ emissions: 403 to



Special features

Architecture and functionality demand a deviation of charges around the columns from level to level.

Challenging design since towards the top the spans become smaller and smaller.

Minergie-ECO-P standard



Year of completion

Autumn 2013

